



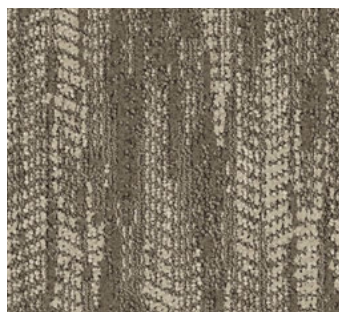
Signature

JOURNEY



Journey brings a world of rich texture and sophistication allowing designers to push their creativity without boundaries. With a global composition, this collection blends seamlessly into any design portfolio and effortlessly into many genres of style.

- Infinity Technology
- 100% solution dyed nylon
- 32 oz. tufted pile weight
- Available in 12' width
- Running line, no minimums
- Additional pattern options available



COVER: JOURNEY B7012 | 7502 SAFARI
 BROADLOOM 12' W | PATTERN REPEAT 24" W X 32" L

 **Signature**



JOURNEY B7012 | 9709 HELM
BROADLOOM 12' W | PATTERN REPEAT 24" W X 32" L



JOURNEY B7012 | 5304 DRIFT
BROADLOOM 12' W | PATTERN REPEAT 24" W X 32" L

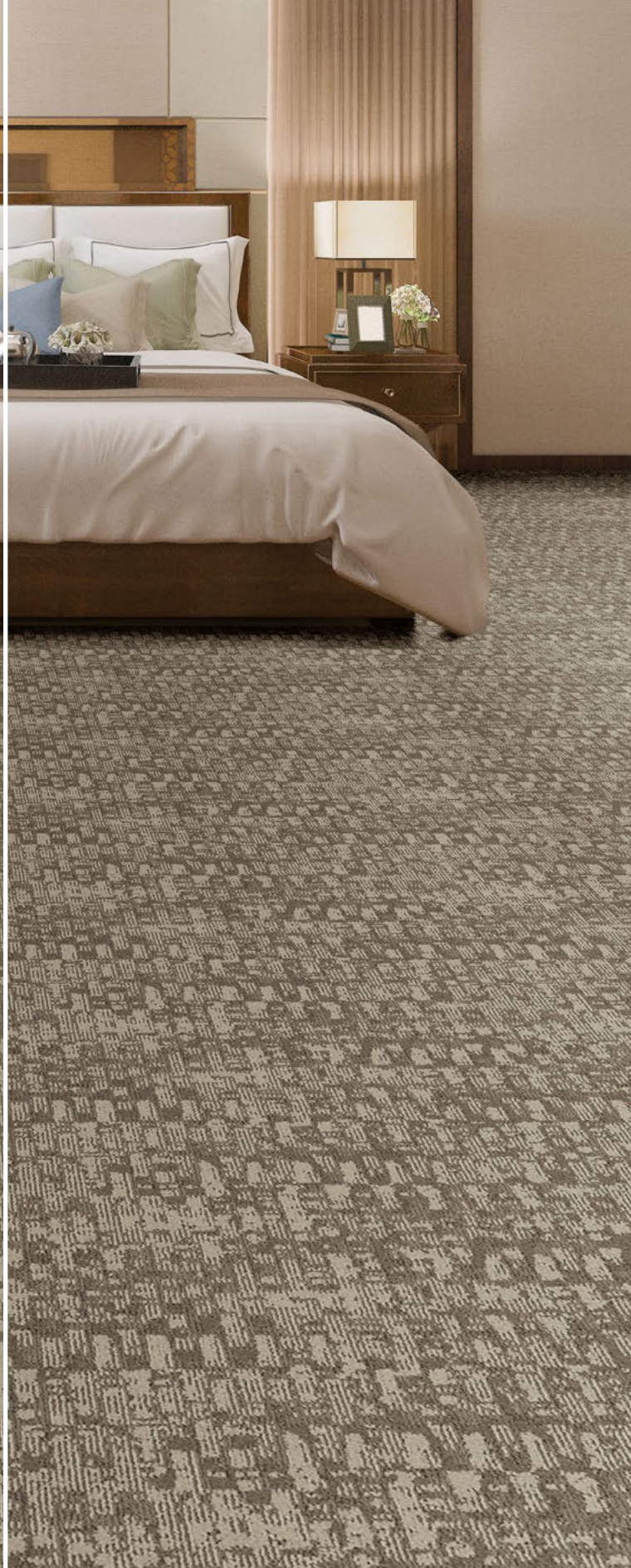
[SIGNATUREFLOORING.COM](https://signatureflooring.com)



JOURNEY B7012 | 1407 ROAM
BROADLOOM 12' W | PATTERN REPEAT 24" W X 32" L



TOUR B7019 | 7502 SAFARI | ADDITIONAL PATTERN OPTION
BROADLOOM 12' W | PATTERN REPEAT 24" W X 36" L



CROSSING B7015 | 7502 SAFARI | ADDITIONAL PATTERN OPTION
BROADLOOM 12' W | PATTERN REPEAT 24" W X 24" L



Additional Pattern Options

Nine additional patterns excite and delight for guestroom experiences, designed for coordination and flexibility in creating unique spaces. Additional pattern options are available in all colorways of Journey and are considered running line.

- Featuring nine additional patterns
- Infinity Technology
- 100% solution dyed nylon
- 32 oz. tufted pile weight
- Available in 12' width
- Additional pattern options are available as running line with no minimums using the Journey colorways



Journey or any of the additional patterns will work beautifully in public spaces or corridors.

Featuring B7020 Passage in color 7502 Safari

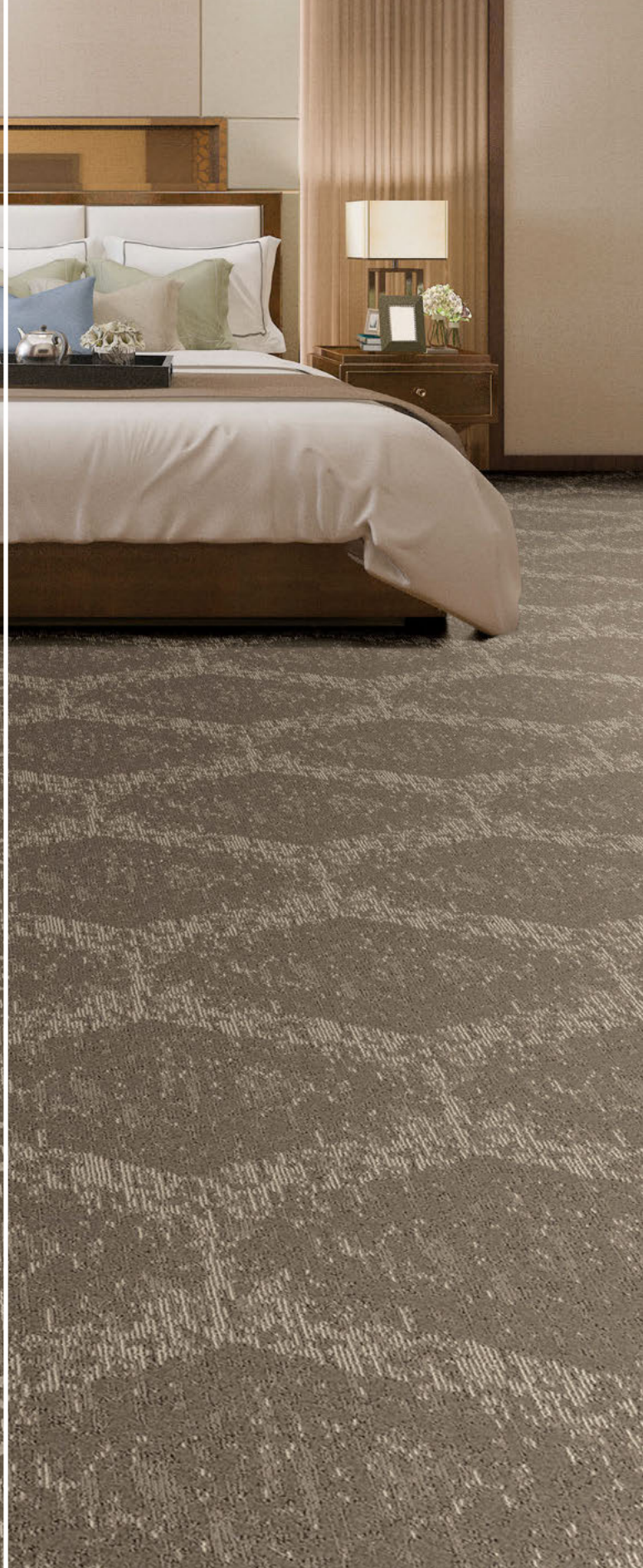


EXCURSION B7013 | 7502 SAFARI | ADDITIONAL PATTERN OPTION
BROADLOOM 12' W | PATTERN REPEAT 24" W X 27" L

WALKABOUT B7021 | 7502 SAFARI | ADDITIONAL PATTERN OPTION
BROADLOOM 12' W | PATTERN REPEAT 24" W X 24" L



TRIP B7018 | 7502 SAFARI | ADDITIONAL PATTERN OPTION
BROADLOOM 12' W | PATTERN REPEAT 24" W X 24" L



PASSAGE B7020 | 7502 SAFARI | ADDITIONAL PATTERN OPTION
BROADLOOM 12' W | PATTERN REPEAT 24" W X 36" L



QUEST B7017 | 7502 SAFARI | ADDITIONAL PATTERN OPTION
BROADLOOM 12' W | PATTERN REPEAT 24" W X 24" L

TRAVEL B7014 | 7502 SAFARI | ADDITIONAL PATTERN OPTION
BROADLOOM 12' W | PATTERN REPEAT 24" W X 24" L

JOURNEY B7012

SPECIFICATIONS

Construction	Infinity
Pile Fiber	100% Solution Dyed Nylon
Surface Appearance	Level Patterned Cut & Loop
Gauge	1/10 (39.37 rows per 10 cm)
Stitches Per Inch	14.3
Average Pile Height193
Total Thickness3125 (10/32)
Tufted Pile Weight.....	32 oz. per sq. yd.
Dye Method	Solution Dyed
Primary Backing	Woven Polypropylene
Secondary Backing	High Performance SBR Latex with Attached Woven Secondary
Density	5,979
Protection	Soil & Stain Release Technology
Tufted Width.....	12'
Pattern Repeat.....	24" x 32"
Adhesive	Signature 2800 Multi-Purpose Latex Signature 1801 Universal Seam Sealer must be used for all installations where seaming is necessary

TESTING

Radiant Panel (ASTM E 648)	Class 1 (Direct Glue)
Smoke Chamber (ASTM E 662)	Less than 450 (Flaming Mode)
Methenamine Pill Test (ASTM D-2859)	Passes
Electrostatic Propensity (AATCC 134).....	Less than 3.0 KV

WARRANTY

Limited 10 Year Commercial Wear Warranty

SUSTAINABILITY

Indoor Air Quality.....	CRI Green Label Plus Certified 2121
Made in USA	

NOTE: For specifications on **ADDITIONAL PATTERN OPTIONS**, please visit our website at signatureflooring.com/resources

Specifications are based on averages from manufacturing processes and may vary within normal industry tolerances. Material supply and / or manufacturing processes may necessitate specification changes without notice. Such variations do not affect product performance. This carpet is manufactured and recommended for floor covering use only. As in all quality carpet, colors are subject to dye lot variations. For optimum side match and finished seam appearance, this product should be installed whenever possible, with seams running perpendicular to major external (outside) light sources. The equipment used to manufacture patterned (graphics) carpet may create visible lines in both length and width directions. This characteristic will not always be detectable in small samples and is not considered a manufacturing defect. Chair pads are recommended under office chairs with rollers to preserve appearance retention, avoid premature or accelerated wear, and act as a deterrent toward delamination. Special backing systems are available that do not require chair pads. Walk off mats are recommended at building entry ways to reduce soiling. For Warranties to apply, all adhesives and seam sealers must be approved by Signature.

NOTE: This product contains a high luster yarn which utilizes cut/sheared processing in the design. The luster level of this yarn may cause a directional effect when viewing the pattern.

For samples, specifications, or other information please contact your sales representative or visit signatureflooring.com

02/2020



2222 S HAMILTON STREET, DALTON, GA 30721 • [SIGNATUREFLOORING.COM](https://signatureflooring.com)

